

THE PHILIPPINES



CORAL TRIANGLE  
INITIATIVE  
ON CORAL REEFS, FISHERIES  
AND FOOD SECURITY

**PRESOM13**  
SENIOR OFFICIALS' MEETING  
MANILA, 27 - 28 NOVEMBER 2017

Scientific Advisory  
Group

Regional Secretariat

# Introduction

## SOM-12 Decision on SAG: #12.6

- 12.6.1. Acknowledged the progress made by the Regional Secretariat with regards to the establishment of the Scientific Advisory Group (SAG);
- **12.6.2. Agreed to initiate the process of the Scientific Advisory Group (SAG) establishment based on the proposed approaches;**
- 12.6.3. Proposed for the members of the initial SAG to be derived based on thematic issues/ad-hoc basis as per required in the implementation of CTI-CFF frameworks such as CTMPAS, CCA-REAP, M&E System etc.;
- 12.6.4. Proposed for the members of the initial SAG to include experts in the various programs/projects undertaken or are in the process of implementation by the Regional Secretariat and/or Development Partners to leverage on the respective programs' financial support;
- 12.6.5. Proposed for the members of the initial SAG to include relevant experts from higher learning institutions/research organizations/regional and international organizations that have signed MOUs with the Regional Secretariat;
- 12.6.6. Acknowledged the CTI-CFF/USAID-DOI Regional Secretariat Work Plan for Strengthening Organizational and Administrative Capacity for Improved Fisheries Management, as the initial approach towards the establishment of the Scientific Advisory Group (SAG); and
- **12.6.7. Encouraged the Regional Secretariat to work with all Technical Working Groups to evaluate the draft “Mechanism of the Utilization of Experts to the establishment of the Scientific Advisory Group” and “CTI- CFF Experts Form” and amend where necessary for SOM-13 approval.**

# Proposed Approach (as introduced in the SOM-12)



# Pre-SOM results

1. A proposed Terms of Reference (TOR) for the establishment of SAG - *developed from draft of mechanism of the utilization of experts to the establishment of SAG*
2. A revised expert form
3. A proposed 2018 work plan for the establishment of SAG
4. Draft SOM-Recommendation for the Establishment of SAG

# 1. Proposed TOR for Establishment of SAG

*Definition, Mission, Objectives, Deliverables, Scope of Work, Selection Procedure, Qualification of Expert, Management, Financing, Annex - Form*

## Definition

The Regional SAG of CTI is a multidisciplinary team working under the coordination of the CTI Regional Secretariat to provide **scientific advice and input** towards meeting the overarching goals of the CTI-CFF stated in the RPOA.

This group shall work closely with other existing bodies such as the Technical Working Groups, University Partnerships, and other relevant parties.

## Mission

Provision of scientific advice and input towards meeting the overarching goals of the CTI-CFF stated in the RPOA

## Objectives

to provide scientific advice/input & assessment to the planning and implementation of CTI-CFF programs under the coordination of the Regional Secretariat

**scientific support and advice** to all bodies under regional and national platform of the CTI-CFF

**technical expertise** for the accomplishment of the CTI-CFF goals and targets stated in the RPOA

**evaluation on scientific relevance of project** proposed under the umbrella of CTI-CFF

## Deliverables

The SAG will provide ongoing written, concise scientific input to any relevant ongoing CTI-CFF activities

Provide detailed reports based on specific tasks or requested by SOM (coordinated with the Regional Secretariat)

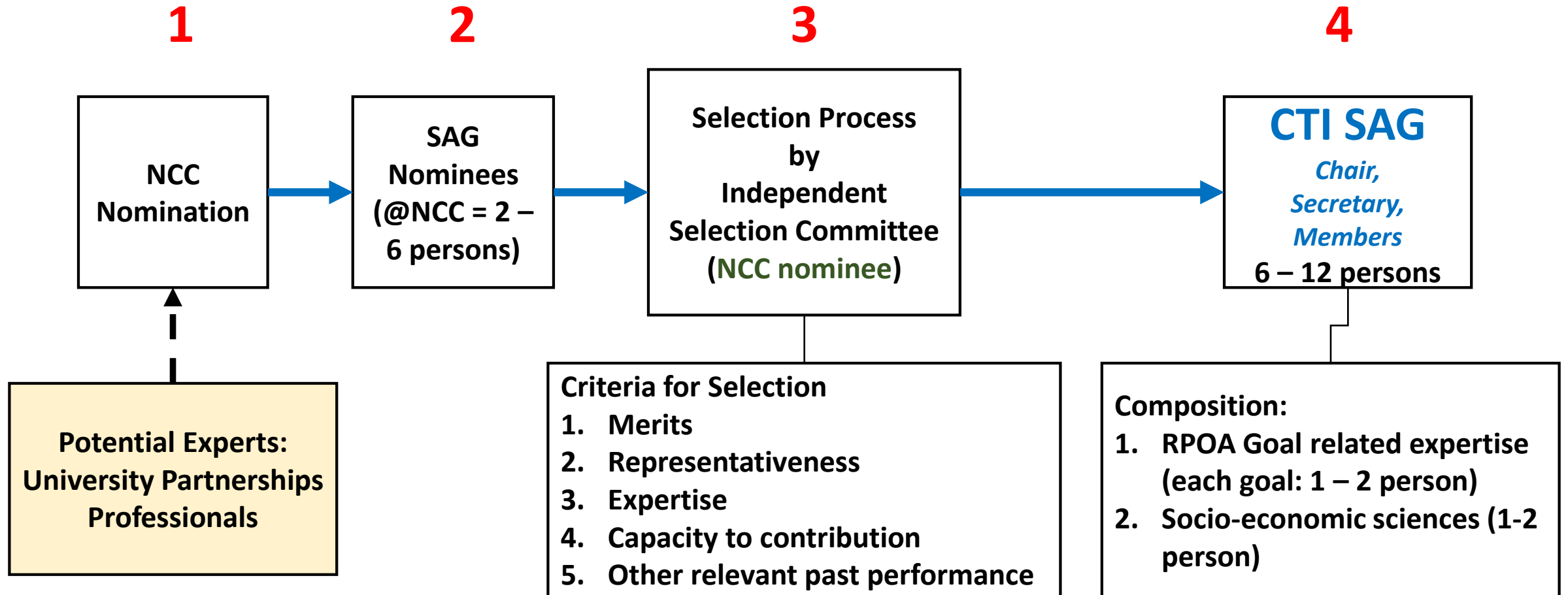
Alert all the relevant parties (with short scientific statement) for any emerging and crucial issues related to CTI-CFF

Assist in disseminating and promoting CTI-CFF goals, progress, and challenges to broader scientific and management communities (e.g. through seminars, symposium, workshops)

### Scopes of Work

1. Coordination with the Regional Secretariat
2. Gathering and Exchange Information/Feedback
3. Analyzing proposals and reports
4. Providing scientific advise and inputs for ongoing projects

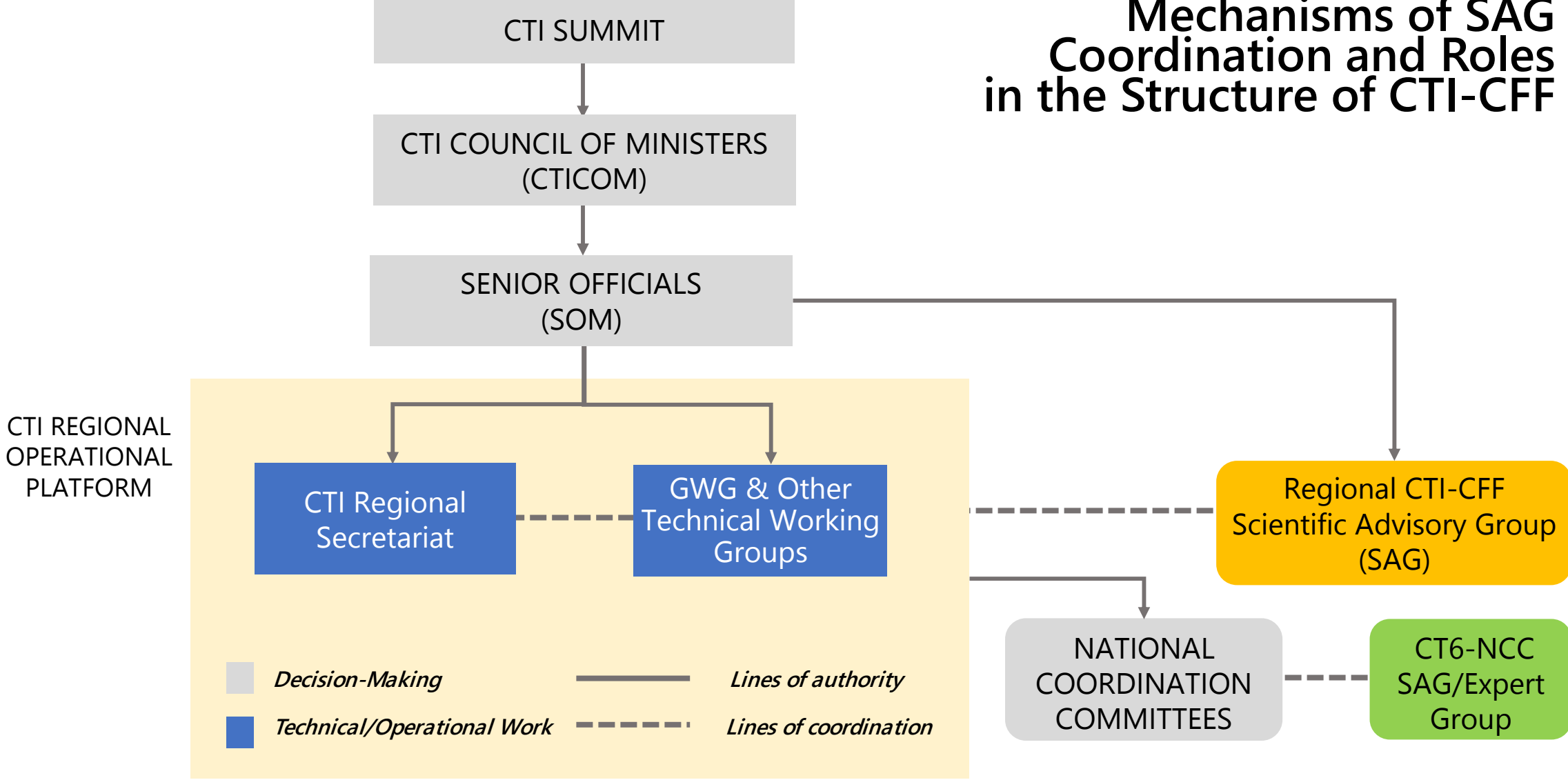
# Mechanism of the Establishment



3 – 6 months (period of establishment)



# Mechanisms of SAG Coordination and Roles in the Structure of CTI-CFF





# Qualifications

- a. Have a PhD degree on CTI-CFF related fields
- b. Have a minimum of 10 years working on issues related to CTI-CFF
- c. Have good scientific reputation based on publications, presentations, and other relevant scientific arena
- d. Have extensive experience in the application/integration of scientific knowledge with management / conservation outcomes
- e. Have good experiences working on any national and regional cooperation or organizations related to CTI-CFF
- f. Preferably she/he have experience in serving as part of scientific advisory group both national or international levels
- g. Willing to serve as SAG members for a period of 3-5 years.

# Management

- a. The Regional Secretariat (RS), with support of other parties, will facilitate the operations of the SAG;
- b. The SAG will mainly work by means of online collaboration, requiring development of appropriate mechanisms, hosted either on the CTI website or other appropriate arrangement;
- c. One dedicated personnel under the RS will be responsible to facilitate all operational needs of SAG (e.g. providing all the necessary documents, online, create special Google Drive, Dropbox, etc.);
- d. More detailed tasks requested by the RS may be performed by the SAG based on special arrangement.

# Financing

- Financial supports to facilitate the establishment is proposed coming from the Regional CTI annual budget,
- Other sources including Partners,
- Financing strategy will be further elaborated and coordinated through FRWG,
- Estimated annual cost (in USD)

<i>Cost Items (annual)</i>	Unit cost	Cost/unit	9 Members	12 Members
Operational (office, admin, etc)	Package	15,000	15,000	20,000
Meetings (2 x per year @3 days)				
` travels & accommodations	Person	4,000	36,000	48,000
` meeting packages	Package	50	450	600
` incidental costs/per diem/honorarium	Person	2,400	21,600	28,800
<b>Total Costs</b>			<b>73,050</b>	<b>97,400</b>

# 2. Experts Form



**CORAL TRIANGLE INITIATIVE**  
ON CORAL REEFS, FISHERIES AND FOOD SECURITY

## CTI-CFF EXPERTS FORM

### A. PERSONAL DATA

**Name** : .....  
**Home Address** : .....  
**Phone Number** : .....  
**Office Address** : .....  
**Office number** : .....  
**Mobile number** : .....  
**E-mail address** : .....  
**Skype** : .....  
**Needs permit from Director** : a) Yes    b) No

### B. EDUCATION HISTORY (Post-High School)

	Institution	Year	Fields
1.	.....	.....	.....
2.	.....	.....	.....
3.	.....	.....	.....
4.	.....	.....	.....

### C. EXPERTISE DESCRIPTION

1.
2.
3.
...

### D. WORK EXPERIENCES

Institution/ Company	Year	Field / Position

### E. TRAINING/WORKSHOPS RELATED TO CFF (Coral Reefs, Fisheries and Food Security)

Training	Year	Organizer

### F. OTHER EXPERIENCES RELATED TO CFF (Coral Reefs, Fisheries and Food Security)


### G. PUBLICATIONS RELATED TO CTI GOALS (Coral Reefs, Fisheries and Food Security)


### H. FORMER EXPERIENCE IN SERVING AS SCIENTIFIC ADVISORY GROUP (if any)


I declare that I am willing to be a voluntary member of CTI-CFF Expert and willing to serve as member of SAG (if selected), following the rules and procedures, and assigned related with my expertise.

.....

.....  
(Full Name and Signature)

# 3. 2018 Workplan

**1. SAG Nomination Process**  
(Jan – March 2018)

**3. SAG Meeting on EAFM**  
(Oct-Dec 2018)

**2. SAG Selection and Establishment**  
(Apr-June 2018)



# Recommendations

1. Appreciate and acknowledged the progress made by the Regional Secretariat with regards to the establishment of the Scientific Advisory Group (SAG) based on the SOM-12 decision;
2. Recognize the proposed Terms of Reference (TOR) for the establishment of SAG based on the developed mechanism of the utilization of experts;
3. Endorsed the CTI-CFF Experts Form;
4. Endorsed the 2018 Workplan

TERIMA KASIH - MARAMING SALAMAT - TANK IU  
OBRIGADO- TAGIO TUMAS

